

# 建立google cloud運行Multicharts及 desktop & mobile remote教學



>準備google acc

>到google cloud網頁,按免費試用

>填寫用戶資料及信用咭資料

(每個google acc均有\$USD300免費額度,請自行參閱google收費方式,免費試用期結束後不會自動收費)

>如圖所示新增VM執行個體

>建立

名稱 <sup>?</sup>  
名稱經設定後即無法變更

instance-1

標籤 <sup>?</sup> (選填)

+ Add label

區域 <sup>?</sup>  
地區經設定後即無法變更

asia-east2 (香港)

區域 <sup>?</sup>  
區域經設定後即無法變更

asia-east2-b

機器設定 <sup>?</sup>

機器系列

一般用途

適用於一般工作負載的機器類型，已針對費用和彈性進行最佳化

系列

N1

採用 Intel Skylake CPU 平台或其前身

機器類型

n1-standard-1 (1 個 vCPU，3.75 GB 記憶體)

 vCPU 記憶體

1 3.75 GB

☏ CPU 平台和 GPU

## 開機磁碟

選取映像檔或快照來建立開機磁碟，或連接現有磁碟。找不到您需要的解決方案嗎？歡迎前往 [Marketplace](#) 探索數百種 VM 解決方案。

公開映像檔 自訂映像檔 快照 現有磁碟

☐ 顯示具備受防護 VM 功能的映像檔 <sup>?</sup>

作業系統

Windows Server

版本

Windows Server 2012 R2 Datacenter

Server with Desktop Experience, x64 built on 20200211

開機磁碟類型 <sup>?</sup>

SSD 永久磁碟

大小 (GB) <sup>?</sup>

50

>自行設定名稱

>區域設定為香港, asia-east2-a/b/c

>機器類型視乎需要自行加減 如策略不需大量運算 一般n1-standard 4gb ram左右已足夠運行MC+IB TWS

>變更開機磁碟 作業系統選擇windows server, 2012/2016/2019 datacenter均可 (注意下方細字為server with Desktop Experience)

>SSD 50gb

>右側有收費詳情, 每月會從usd\$300額內扣除

篩選 VM 執行個體

名

Windows VM instances are not included with the free trial. To use them, first enable billing on your account. You'll still be able to apply your free trial credits to eligible products and services.

>因應Google新使用條款, free trial vm個體需執行以下步驟

>按左上選單>帳單

>升級

>返回computer engine, VM執行個體

>重新整理頁面

>等候cloud computer建立完成

Google Cloud Platform

帳單

總覽 我的帳單帳戶

帳單帳戶總覽 付款總覽

當前月分  
2020/2/1 至 2020/2/28

本月至今的總費用  
HK\$0.00

月底總費用 (預估)  
歷史資料不足, 無法預估費用

→ 查看報表

費用趨勢  
2019/2/1 至 2020/2/29

平均每月總費用  
HK\$0.00

帳單帳戶 管理  
我的帳單帳戶

機構  
沒有任何機構

免費試用抵免額

HK\$2,339  
免費試用抵免額  
總抵免額: HK\$2,339

365  
剩餘天數  
將於 2021年2月27日結束

在免費試用期間, 您不需要支付任何費用。如要在免費試用期結束後繼續執行您的專案, 請升級為付費帳戶。

升級 瞭解詳情



>按遠端桌面通訊協定傍箭嘴

>設定windows密碼

>自行設定使用者名稱後按設定

>google會自行產生一組新密碼

**\*\*請記低user name & password**



Attempting to connect...

Connect

Enter your credentials

These credentials will be used to connect to

Domain:

Username:

Password:

OK

Cancel



Server Manager - Local Server

Dashboard  
Local Server  
All Servers  
File and Storage Services

PROPERTIES  
For instance-1

Computer name: Instance-1  
Workgroup: WORKGROUP

Windows Firewall: Public: On  
Remote management: Enabled  
Remote Desktop: Enabled  
NIC Teaming: Disabled  
Ethernet: IPv4 address assigned by DHCP, IPv6 enabled

Operating system version: Microsoft Windows Server 2012 R2 Datacenter  
Hardware information: Google Google Compute Engine

Internet Explorer Enhanced Security Configuration (IE ESC) reduces the exposure of your server to potential attacks from Web-based content. Internet Explorer Enhanced Security Configuration is enabled by default for Administrators and Users groups.

Administrators:  
☒ On (Recommended)  
☐ Off

Users:  
☒ On (Recommended)  
☐ Off

More about Internet Explorer Enhanced Security Configuration

OK Cancel

LAST INSTALLED UPDATES  
Windows Update  
Last checked for updates: Never  
Install updates automatically using Windows Update  
Today at 7:19 AM

WINDOWS ERROR REPORTING  
Off  
Customer Experience Improvement Program: Not participating  
IE Enhanced Security Configuration: On  
Time zone: (UTC-05:00) Monrovia, Reykjavik  
Product ID: 00253-50000-00000-AA442 (activated)

PROCESSORS  
Intel(R) Xeon(R) CPU @ 2.00GHz  
Installed memory (RAM): 3.75 GB  
Total disk space: 50 GB

EVENTS  
All events | 8 total

Server Name	ID	Severity	Source
INSTANCE-1	15301	Warning	Microsoft-Windows-HttpEvent
INSTANCE-1	10149	Warning	Microsoft-Windows-Windows Remote Management
INSTANCE-1	4440	Warning	Microsoft-Windows-Complus
INSTANCE-1	10149	Warning	Microsoft-Windows-Windows Remote Management
INSTANCE-1	7023	Error	Microsoft-Windows-Service Control Manager
INSTANCE-1	4427	Error	Microsoft-Windows-MSDTC
INSTANCE-1	4691	Error	Microsoft-Windows-Complus

SERVICES  
All services | 138 total

Server Name	Display Name	Service Name	Status	Start Type
INSTANCE-1	WinHTTP Web Proxy Auto-Discovery Service	WinHttpAutoProxySvc	Running	Manual
INSTANCE-1	Windows Driver Foundation - User-mode Driver Framework	wudfsvc	Stopped	Manual (Triggered)
INSTANCE-1	Distributed Link Tracking Client	TrkWks	Running	Automatic
INSTANCE-1	Hyper-V Volume Shadow Copy Requestor	vmtoolsd	Stopped	Manual (Triggered)
INSTANCE-1	Hyper-V Data Exchange Service	vmtoolsdexchange	Stopped	Manual (Triggered)

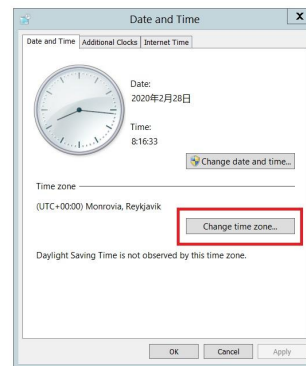
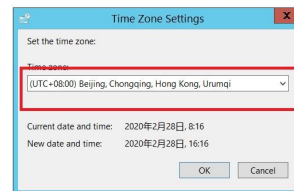
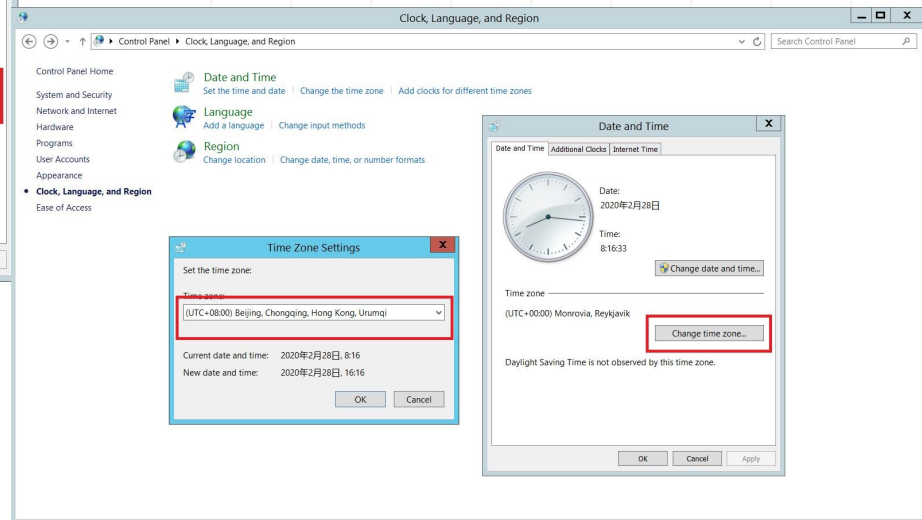
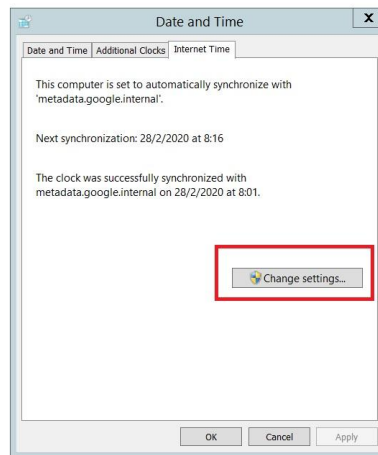
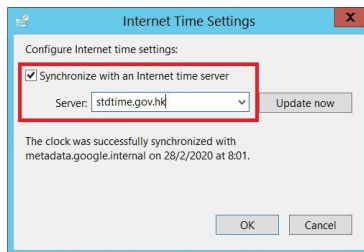
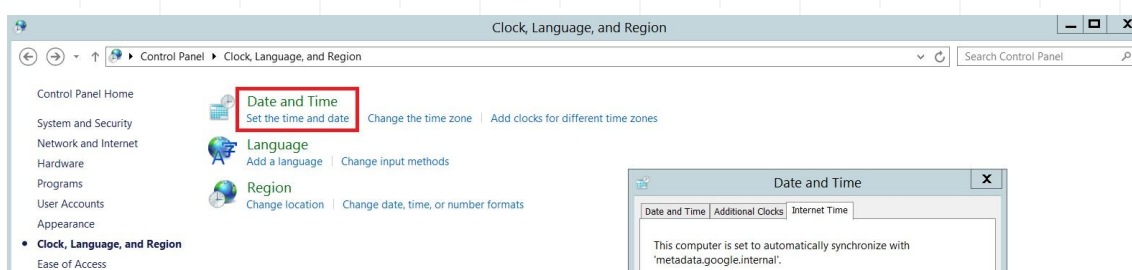
>成功登入cloud後開啟server manager

>因windows server IE security default setting,導致多個網頁不能瀏覽及下載檔案

>如需下載chrome/multicharts/IB TWS 等軟件需做以下步驟

>如圖所示於local server,按IE Enhanced Security Config>設定為off

>設定後才可正常使用IE



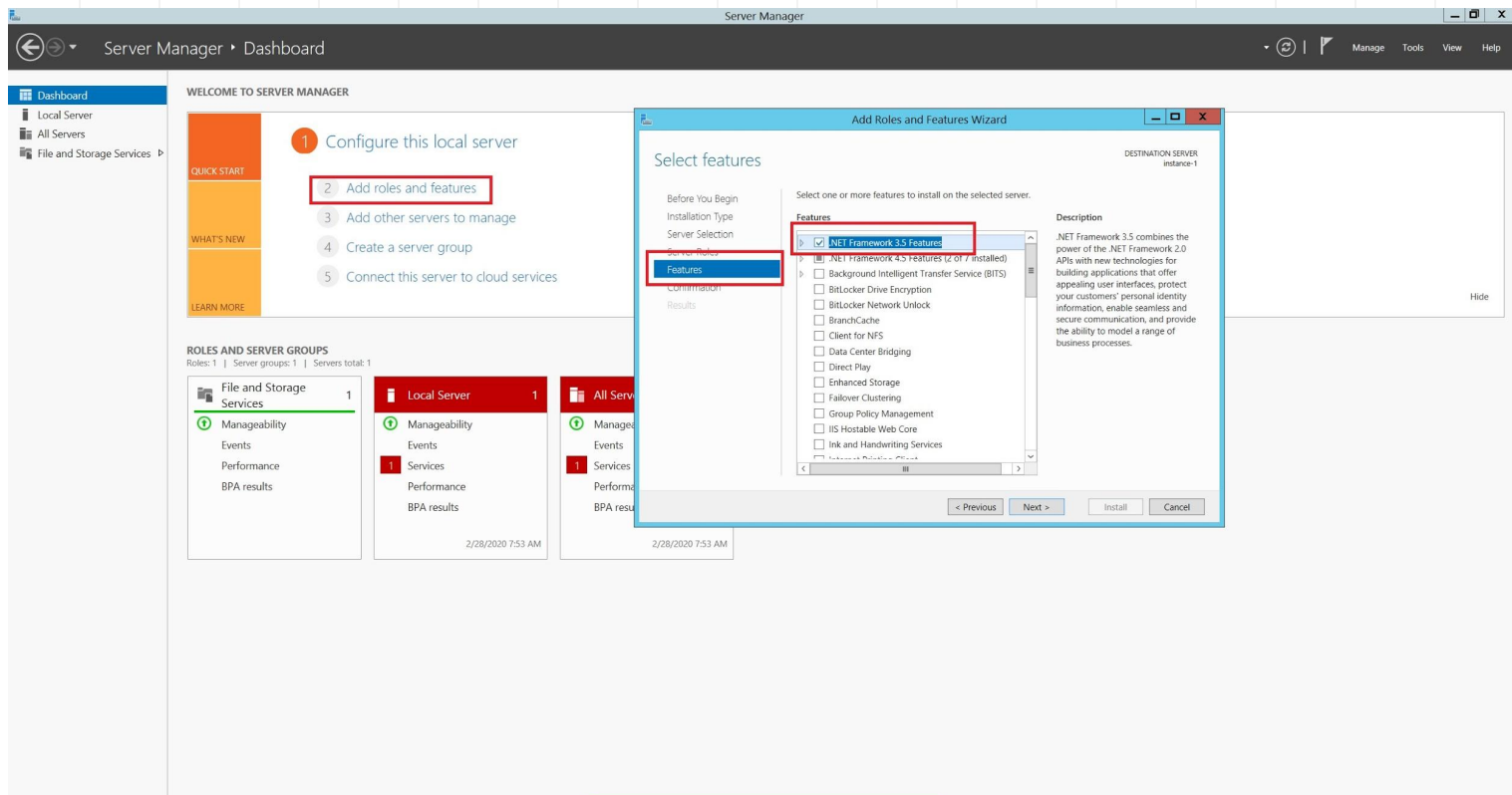
>如需使用cloud作程式交易，建議重新設定時間

>開啟控制台，選Date Time, Internet Time設定為天文台時間

輸入stdtime.gov.hk

>Time Zone設定為香港





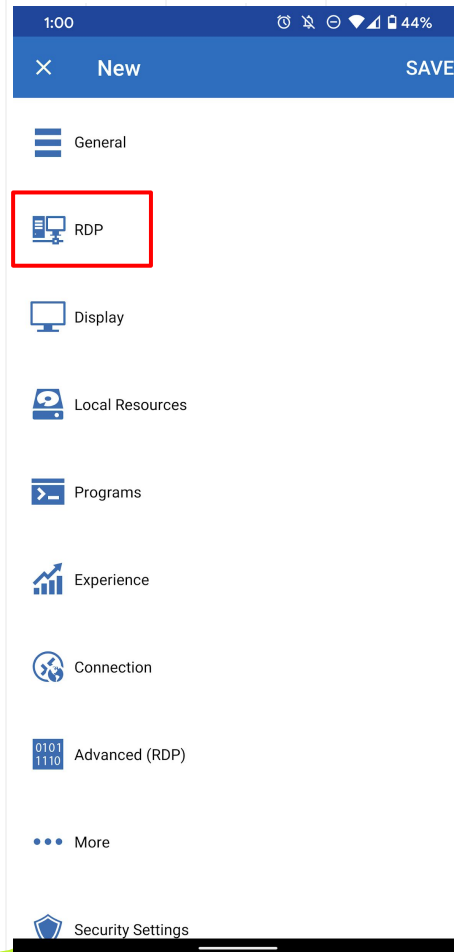
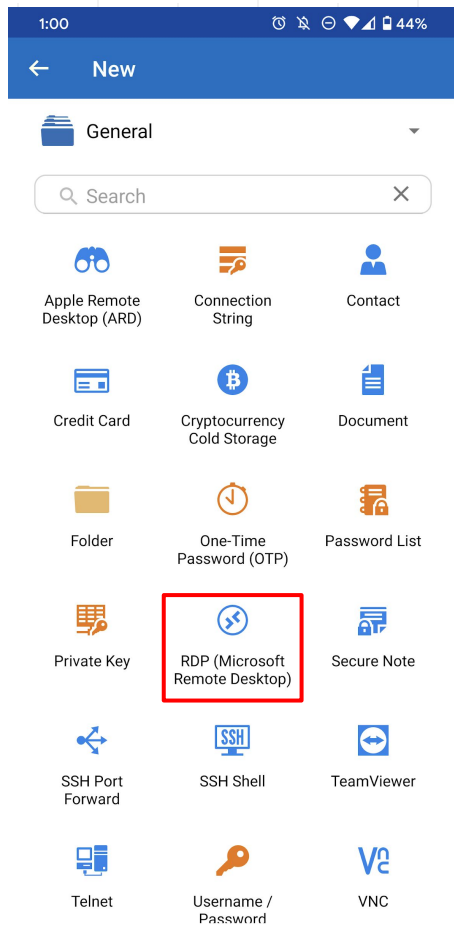
>安裝multicharts前需安裝net framework 3.5

>於server manager, dashboard按 add roles and features

>於features下選擇net framework 3.5, 按next安裝

>自行到官網下載multicharts & IB TWS安裝

>用作程式交易cloud設定完成



>如透過電話remote cloud,  
因teamviewer & chrome  
remote均未能正常使用,原  
因未明

>下載Remote Desktop  
Manager app

>進入app後按右下角"+ "號

>選RDP,再選RDP



## LOGON

Host

Port

0

IS ONLINE

Set the port to 0 to use the default port

RDP type

Normal

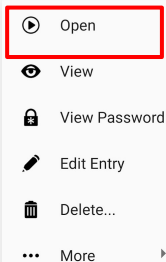
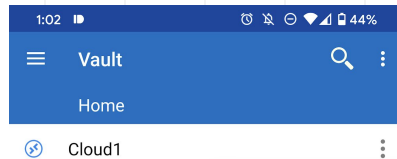
Username

Domain

Password

☐ Always ask password

☐ Open console (Admin mode)



>Host輸入cloud IP address, 如未知ip address 請返回google cloud網頁, vm執行個體頁面, 外部ip一欄查閱

>輸入google cloud user name & password

>save後app home page會出現新欄位

>於欄位右邊按open即可remote google cloud



# END

歡迎到以下連登post交流Program Trading

[\[季經\]程式交易敢死隊](#)